

Specs: .26.31 ESpecs23

WATERPROOFING DINCEL CONSTRUCTION SYSTEM

PRODUCTS REQUIRED: MAXSEAL FLEX, MAXMESH, MAXJOINT ELASTIC, MAXPLUG, EASYBOND

For floor/wall joint with Guide Track on a concrete floor

On even surfaces:

Scuff and Wet surface and apply MAXSEAL FLEX at the rate of 1mm thickness to the area covered by the Guide Track extending by 50mm past the area covered by the Track on to floor. Place Guide Track and secure as normal.

On uneven surfaces:

Scuff and Wet surface and apply MAXJOINT ELASTIC to external edges of area covered by Guide Track at a thickness of no less than 6mm x minimum width of 20mm. Place Guide Track and secure.

After placing wall sections and filling with concrete:

Scuff to 100mm above floor level. Wet wall floor area at base. Apply MAXSEAL FLEX at the rate of 1kg/m² thick to an area from 100mm above joint to floor.

Direct pour to concrete floor:

Wet floor and apply MAXSEAL FLEX at the rate of 1mm thick to the area extending by 50mm past the area covered by the pour. After curing of concrete, scuff to 100mm above floor level, wet wall floor area at base.

Apply MAXSEAL FLEX at the rate of 1kg/m² thick to an area from 100mm above floor/wall joint to 100 mm on the floor. Total 200mm, place MAXMESH (200mm x 50m roll) Allow to cure overnight, wet area and apply second coat at rate of 1kg/m² covering the mesh.

Water penetration at floor/wall joint:

Use MAXPLUG to stop waterflow and then proceed as per wall/floor joint recommendation.

Return Wall Dintel Guide Track:

Scuff and Wet surface and apply MAXSEAL FLEX at 1mm thickness approximately to Guide Track, fasten to wall as normal. Remove all excess using wet sponge. Total adhesion and waterproofing

Total 200mm, place MAXMESH (200mm x 50m roll)

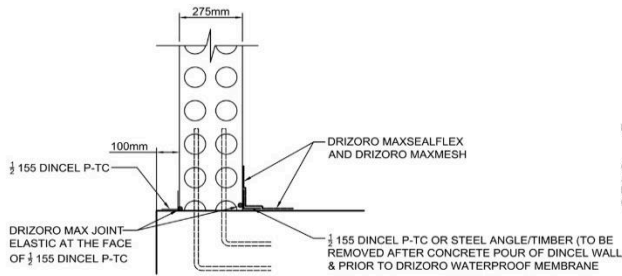
Allow to cure overnight, wet area and apply second coat at rate of 1kg/m² covering the mesh.

Vertical wall joints:

If required, scuff and seal all internal or external vertical joints (50mm) and embed 50mm mesh in first coat using MAXSEAL FLEX at the rate of 1kg/m² per coat

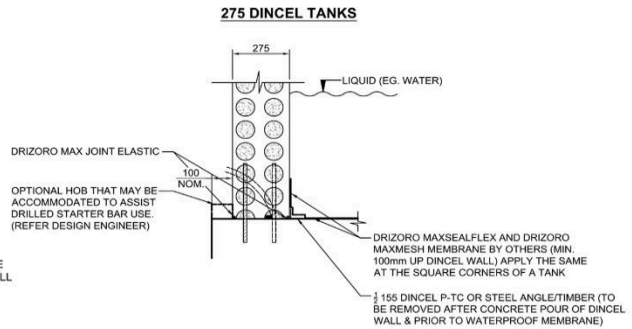
if the structure is used for liquid containment ensure that total floor area is coated

Allow to cure overnight, wet area and apply second coat MAXSEAL FLEX at the rate of 1kg/m²



DRIZORO WATERPROOFING OF TYPICAL LIFT PIT BASE, DETAILS

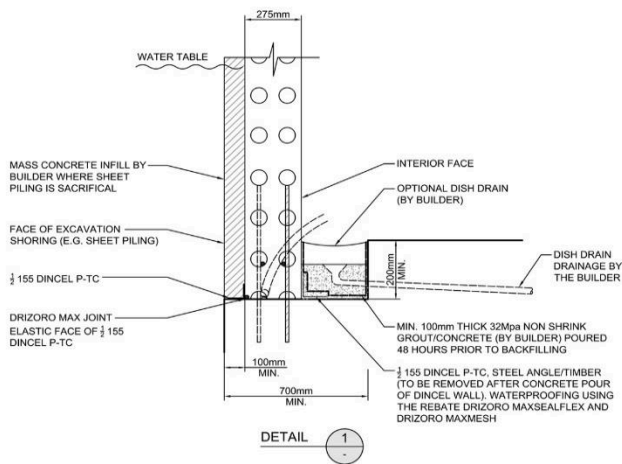
REFER TO ENGINEERS DESIGN FOR WALL REINFORCEMENT



DRIZORO WATERPROOFING TANK WALL, DETAIL

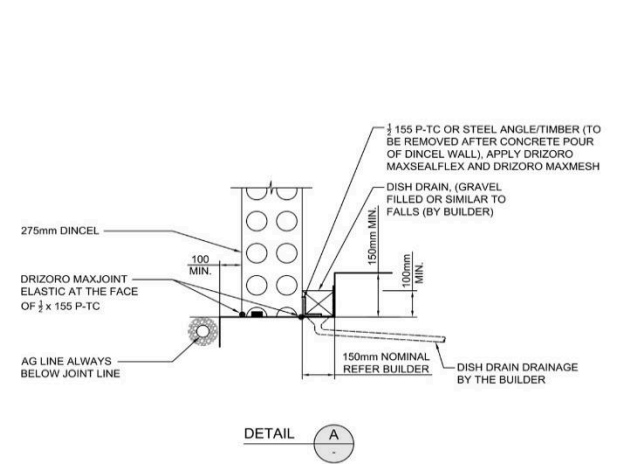
REFER TO ENGINEERS DESIGN FOR WALL REINFORCEMENT
NO DINCEL ACCESSORY PROFILES ARE ALLOWED UNDERNEATH THE DINCEL WALL

BASEMENT CONSTRUCTION AND DRIZORO WATERPROOFING FOR PERMANENT WATER TABLE ABOVE THE FOOTING LEVEL



NO DINCEL ACCESSORY PROFILES ARE ALLOWED UNDERNEATH THE DINCEL WALL

BASEMENT CONSTRUCTION WITH 275 DINCEL AND DRIZORO WATERPROOFING FOR PERMANENT WATER TABLE BELOW THE FOOTING LEVEL



NO DINCEL ACCESSORY PROFILES ARE ALLOWED UNDERNEATH THE DINCEL WALL

GENERAL:

To obtain superior adhesion on Dincel, the areas to be coated to be abraded (16 grit ripper disc) just to take the shine off the surface.

WATER CONTAINMENT:

We recommend the application of 2 coats of MAXSEAL FLEX at the rate of 1kg/m² per coat to the concrete slab. It can be applied immediately after placing the concrete (green) before installation of above.

It is BEST practise to all vertical joints to be scuffed (50mm) and 2 coats of MAXSEAL FLEX at the rate of 1kg/m² per coat applied. Incorporate a 50mm Maxmesh in all vertical joints imbedded in the first coat.

Total Yield per 35kg Kit: 20m² at 2 coats finish.

FINISHING:

If finishing is required a single coat of EASYBOND (roll on) at the rate of 1kg/m² will provide a bonding bridge without prior scuffing.

Anything that can be applied to a mortar surface can be applied to Easy Bond.

Note: As each application has different requirements, we offer a job specification and inspection service.

PO Box 694, Padstow NSW 2211, Australia

Phone: +61 (2) 9771 0011

Email: hans@swppl.com.au Web: www.swppl.com.au