



WATMAT®

QUICK SETTING MORTAR FOR LEVELLING MANHOLE COVERS AND FOR REPAIRS FOR IMMEDIATE USE.



DESCRIPTION

WATMAT is a quick setting mortar, factory mixed with special cements, silica and additives. It is ready for use for leveling newly constructed manholes and urgent repairs to factory floors.

ADVANTAGES

- For emergency repairs and resetting manhole covers on streets, public roads and concrete factory floors.
- Traffic can pass over the repair within two hours of application.
- Just mix with water.
- The addition of MAXCRYL to the mixing liquid produces an even stronger mixture.
- It adheres well to the substrate and its grey colour blends in with the concrete.

- It is non-toxic and odourless which makes WATMAT an ideal product for areas with little ventilation.
- Waterproof. Very low water absorption.

HOW TO USE

Surface preparation: The concrete substrate should be free from all loose particles, dirt, grease, oil or other contaminants. To achieve this, the surface should be bush hammered or grit blasted so as to expose good clean sound concrete.

Application and mixing:

For vertical patching and repair work WATMAT can be mixed with clean water and trowel applied. **However**, for a high performance finish and floor treatments, the inclusion of **MAXCRYL** into the mixing water at a rate of 1

part **MAXCRYL** to 3 parts water is necessary.

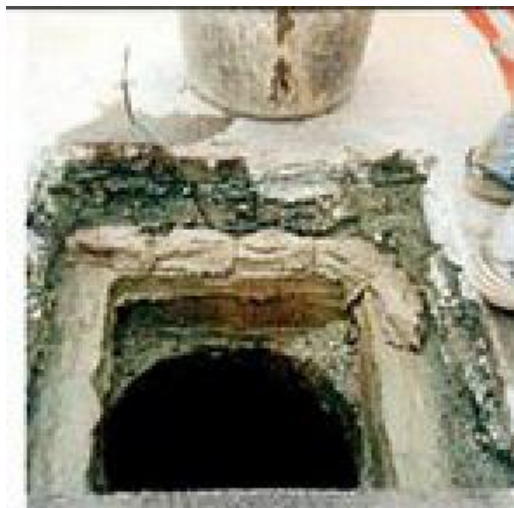
Setting:

Once mixed to a mortar consistency, WATMAT can take from 5 to 20 minutes to set, according to the climatic and surface temperatures. Trials should be carried out to establish that whatever quantities you mix can be applied before the material starts to set.

Mixing: Mix the required amount of WATMAT with clean water. As a guide, 25 Kgs. of WATMAT require between 4.3 and 4.6 litres of water.



Application: Mix the required amount of WATMAT, place it around the perimeter of the hole, place the leveling tool on top and inside.



After twenty minutes the manhole cover can be put on, finishing with the final asphalt coat.

CAUTIONS

- Do not apply at temperatures below 5° C or on freezing surfaces.
- Do not re-use previously mixed amounts of WATMAT.
- Use only clean water.
- Do not mix WATMAT with other products.
- Do not re-temper.

TECHNICAL DATA

CHARACTERISTICS:

Form	Powder
Colour	Grey
Powder density	1.31 (kg/dm)
Set density	2.30 (kg/dm)
PH	12.2
Elasticity Module	290.000 (kp/cm ³)
Setting time	15/20 minutes
Quantity	Approx. 25 kg fills a 5 cm level in 1 m. diameter hole
Storage	In a dry place, protected from humidity
Storage time	6 months



MECHANICAL RESISTANCE:

AGE	FLEXOTRACTION Kp/cm ³	COMPRESSION Kp/cm ³
1 Hour	28	100
2 Hours	30	127
4 Hours	31	136
1 Day	38	151
28 Days	59	398

Test no. 14.896 Eduardo Torroja

CHEMICAL RESISTANCE TO DIFFERENT DILUTIONS:

TEST LIQUIDS	REMARKS AFTER 28 DAYS OF IMMERSION
Water	Without apparent change
Sodium Hydroxide at 10%	Without apparent change
Sulfhydic acid	Without apparent change
Gasoline	Without apparent change
Mineral oil SAE 30	Without apparent change
Xileno	Without apparent change
Methyl ethylcetone	Without apparent change
Trichloroethylene	Without apparent change

Test no. 15.463 Eduardo Torroja Institute from Madrid according to ASTM 267 standard.



PACKAGING

35 Kg Kit in drums.

STORAGE

12 months in bags, 36 months in drums, in its original packaging in a dry covered place, protected from humidity and frost.

PRECAUTIONS

WATMAT is abrasive and during preparation protective rubber gloves should be worn, If any splashes into the eyes, clean with water thoroughly, do not rub. If irritation continues seek medical advice.



WATMAT

GUARANTEE

The information contained in this leaflet is based on our experience and technical knowledge, obtained through laboratory testing and from bibliographic material. **DRIZORO** reserves the right to introduce changes without prior advice. Any use of this data beyond the purposes expressly specified in the leaflet will not be the Company's responsibility unless authorised by us. **The data shown on consumptions, measurement and yields are a guide only and based on our experience.** This data is subject to variation due to the specific atmospheric and jobsite conditions so reasonable variations from the data may be experienced. In order to obtain real data, a test on the jobsite must be carried out and is the clients responsibility. We shall not accept responsibility exceeding the value of the purchased product. For any other reservations, consult our Technical Department. This version of bulletin replaces the previous bulletin 20.00.

SCIENTIFIC WATERPROOFING PRODUCTS PTY LTD ABN: 155 659 948
Unit 4/92 Bryant Street PADSTOW NSW 2211
PO BOX 694 PADSTOW NSW 2211
Phone 02 9771 0011 Fax 029771 0077

www.swppl.com.au/ e-mail: info@swppl.com.au
For other Waterproofing Products Contact:



 **Don't just waterproof it...
DRIZORO it!**
Visit: www.swppl.com.au

 **SCIENTIFIC
WATERPROOFING
PRODUCTS** 