

Specs: 26.315 Specs 23

WATERPROOFING DINCEL SWIMMING POOLS AND WATER COTAINMENT CONSTRUCTION SYSTEM

PRODUCTS REQUIRED: MAXSEAL FLEX, MAXMESH, MAXJOINT ELASTIC, MAXPLUG, EASYBOND

For floor/wall joint with Guide Track on a concrete floor

On even surfaces:

Scuff and wet surface and apply MAXSEAL FLEX at the rate of 1mm thickness to the area to be covered by the Guide Track extending by 50mm past the area covered by the Track on to floor. Place Guide Track and secure as normal.

On uneven surfaces:

Scuff and wet surface and apply MAXJOINT ELASTIC to external edges of area covered by Guide Track at a thickness of no less than 6mm x minimum width of 20mm. Place Guide Track and secure.

After placing wall sections and filling with concrete:

Scuff and wet to 100mm above floor level. Wet wall floor area at base. Apply MAXSEAL FLEX at the rate of 1kg/m² thick to an area from 100mm above joint and out to floor. Place MAXMESH. Allow to cure overnight, wet area and apply second coat at rate of 1kg/m² covering the mesh.

Direct pour to concrete floor:

Wet floor and apply MAXSEAL FLEX at the rate of 1mm thick to the area extending by 50mm past the area covered by the pour. After curing of concrete, scuff to 100mm above floor level, wet wall floor area at base.

Apply MAXSEAL FLEX at the rate of 1kg/m² to an area from 100mm above floor/wall joint to 100 mm on the floor. Total 200mm, place MAXMESH (200mm x 50m roll) Allow to cure overnight, wet area and apply second coat at rate of 1kg/m² covering the mesh.

Active Water penetration at floor/wall joint:

Use MAXPLUG to stop waterflow and then proceed as per wall/floor joint recommendation.

Return Wall Dintel Guide Track:

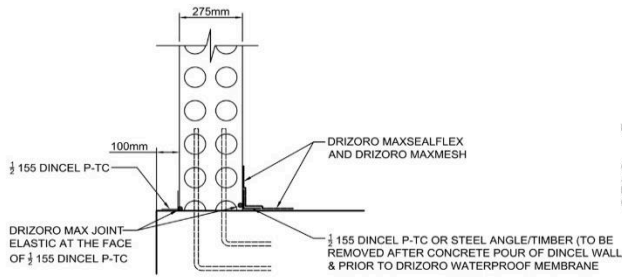
Scuff and wet surface and apply MAXSEAL FLEX at 1mm thickness approximately to Guide Track, fasten to wall as normal place MAXMESH (200mm x 50m roll) Allow to cure overnight, wet area and apply second coat at rate of 1kg/m² covering the mesh.

Allow to cure overnight, wet area and apply second coat at rate of 1kg/m² covering the mesh.

Vertical wall joints:

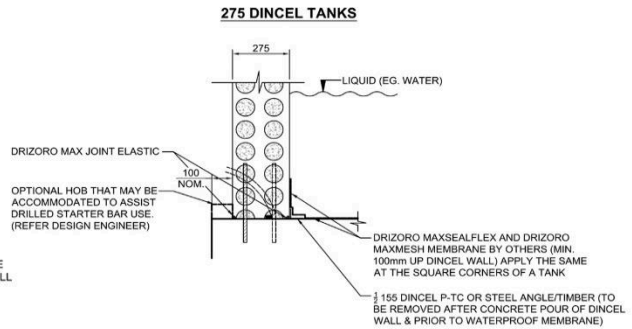
Seal all internal or external vertical joints if the structure is used for liquid containment ensure area is scuffed and wet and then coated using MAXSEAL FLEX at the rate of 1kg/m² - place 50mm Maxmesh in first coat. Allow to cure o/night. Wet and apply second coat at the rate of 1kg/m²

Allow joints to cure overnight, apply coat of EASYBOND at the rate of 1kg/m² over the entire structure if a finish is required.



DRIZORO WATERPROOFING OF TYPICAL LIFT PIT BASE, DETAILS

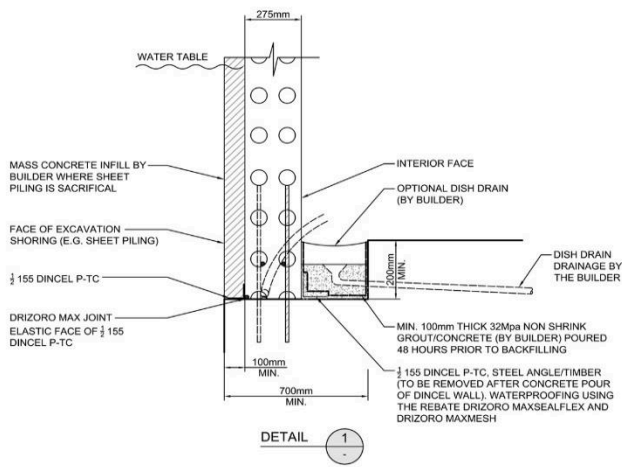
REFER TO ENGINEERS DESIGN FOR WALL REINFORCEMENT



DRIZORO WATERPROOFING TANK WALL, DETAIL

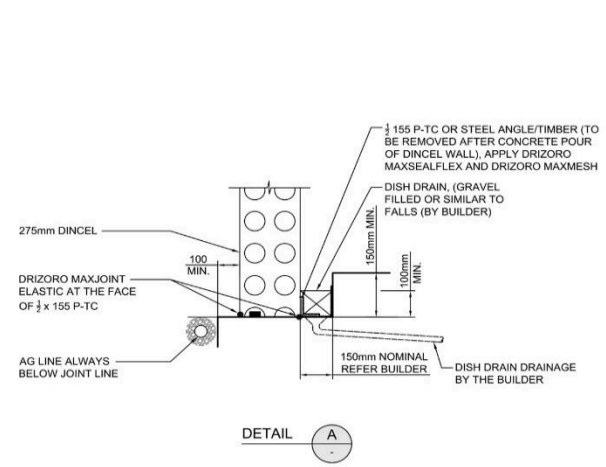
REFER TO ENGINEERS DESIGN FOR WALL REINFORCEMENT
NO DINCEL ACCESSORY PROFILES ARE ALLOWED UNDERNEATH THE DINCEL WALL

BASEMENT CONSTRUCTION AND DRIZORO WATERPROOFING FOR PERMANENT WATER TABLE ABOVE THE FOOTING LEVEL



NO DINCEL ACCESSORY PROFILES ARE ALLOWED UNDERNEATH THE DINCEL WALL

BASEMENT CONSTRUCTION WITH 275 DINCEL AND DRIZORO WATERPROOFING FOR PERMANENT WATER TABLE BELOW THE FOOTING LEVEL



NO DINCEL ACCESSORY PROFILES ARE ALLOWED UNDERNEATH THE DINCEL WALL

GENERAL:

For swimming pools- apply finish coat or tiles.

WATER CONTAINMENT:

We recommend the application of 2 coats of MAXSEAL FLEX at the rate of 1kg/m² per coat to the concrete slab. It can be applied immediately after placing the concrete (green) before installation of above.

Floor /wall joint: Scuff to 100mm above floor level. Wet wall floor area at base. Apply MAXSEAL FLEX at the rate of 1kg/m² thick to an area from 100mm above joint and 100mm to floor. . Allow to cure o/night.

Wet and apply second coat at the rate of 1kg/m²

Walls-vertical joints to be scuffed and wet and 1 coat of MAXSEAL FLEX at the rate of 1kg/m² per coat applied.

Incorporate a 50mm Maxmesh in all vertical joints imbedded in the first coat. Allow to cure o/night.

Wet and apply second coat at the rate of 1kg/m²

FINISHING:

If finishing is required a single coat of EASYBOND at the rate of 1kg/m² will provide a bonding bridge without prior scuffing.

Anything that can be applied to a mortar surface can be applied to Easy Bond – rocks, tiles, plaster.

Note: As each application has different requirements, we offer a job specification and inspection service.

PO Box 694, Padstow NSW 2211, Australia

Phone: +61 (2) 9771 0011

Email: hans@swppl.com.au Web: www.swppl.com.au